



**NOW  
OPEN**

**Southfields**  
veterinary specialists

**EXPERTISE  
LIKE NO OTHER**

The number one choice for small  
animal cancer treatment in the UK

**NEW** state-of-the-art  
veterinary hospital with  
dedicated Oncology  
and Radiotherapy Suite  
**NOW OPEN**



# THE BEST CARE JUST GOT BETTER

At Southfields Veterinary Specialists, we've always been committed to achieving the best possible outcome for every cancer patient referred to us. Now that excellence continues, at our dedicated Oncology and Radiotherapy Suite in our state-of-the-art, £16M, 42,000 sq ft veterinary hospital in Basildon.

It's all part of our continuing commitment to provide the best available cancer care for our patients.

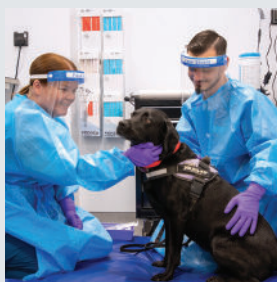


Outstanding facilities. A highly experienced team. Unsurpassed expertise and knowledge. Totally committed to providing the best possible care. For your next oncology or radiology referral, expect the best. Choose the new Oncology and Radiotherapy Suite at Southfields Veterinary Specialists, for the very best in small animal treatment and care.



## Why choose Southfields

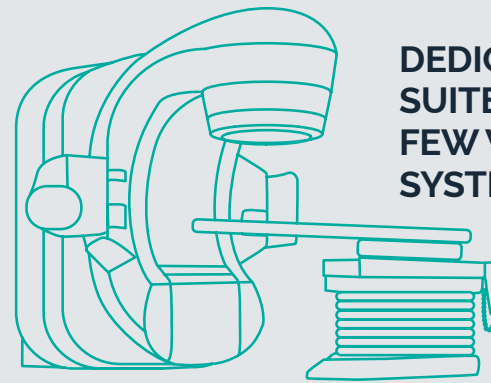
**Unparalleled expertise** – one of the only UK referral centres with two full-time client-facing specialists in radiation oncology and the only European practice with two on-site, full-time double-boarded specialists in small animal oncology and radiation oncology, along with dedicated radiotherapy technicians and therapeutic radiographers.



**Cutting-edge technology** – new Varian TrueBeam® radiotherapy system enables us to treat with pinpoint accuracy tumours previously considered untreatable.

**Purpose-built Oncology and Radiotherapy Suite** – incorporates our chemotherapy and radiotherapy treatment facilities all in one place, for a less stressful experience for our patients.

# WORLD CLASS ONCOLOGY AND RADIO THERAPY



DEDICATED ONCOLOGY SUITE HOUSING ONE OF THE FEW VETERINARY LINAC SYSTEMS IN THE UK

New Varian Truebeam® LINAC system



TREATS CANCER ANYWHERE IN THE BODY



DRAMATICALLY REDUCES TREATMENT TIMES



HIGH ACCURACY

## PURPOSE BUILT ONCOLOGY AND RADIO THERAPY SUITE

2

- Chemotherapy rooms
- Oncology outpatients ward
- LINAC suite incorporating patient prep, control and viewing rooms

SEPARATE WAITING AREA FOR ONCOLOGY OUTPATIENTS



## INDIVIDUAL CARE PLANS FOR EVERY PATIENT incorporating the treatments they need



Chemotherapy



Immunotherapy



Surgery



Interventional Oncology



Radiotherapy



Palliative Care

DEDICATED  
ONCOLOGY AND  
CHEMOTHERAPY  
NURSES

24 HOUR CARE 365 DAYS A YEAR

### RECEPTION AND WAITING AREA FOR ONCOLOGY OUTPATIENTS

Separate entrance and waiting area for oncology outpatients.



### ONCOLOGY WARD

Dedicated ward for outpatients receiving courses of radiotherapy – cared for by our dedicated Oncology nurses.



### LINAC

High-precision Varian TrueBeam® radiotherapy system with integral CT scanner for submillimeter patient positioning, RapidArc™ (VMAT) treatment delivery, remotely adjustable 6 degrees of freedom (6DOF) couch and advanced respiratory motion management – enabling it to automatically adjust dose as patient breathes, meaning we can target with pinpoint accuracy tumours that were previously untreatable (lung tumours, body wall tumours, liver tumours, adrenal tumours).



### 2 CHEMOTHERAPY ROOMS

Two dedicated chemotherapy rooms with human standard drug preparation hoods and waste disposal units.



## TYPES OF RADIOTHERAPY

### Manual

Simple treatment plans required for small tumours that are externally visible or for the treatment of scars after a tumour has been surgically removed, to try and prevent recurrence.

### 3D Conformal Radiation Therapy (3DCRT)

Uses a CT scan to ensure accurate targeting of tumours with radiation whilst avoiding treatment of the nearby normal structures.

### IMRT (Intensity-Modulated Radiation Therapy)

A newer adaptation of 3DCRT which can be useful in some cases as it even further reduces radiation dose to normal tissues, reducing side effects.

### Stereotactic Radiation Therapy (SRT)

This type of highly focused, intense radiation therapy is possible for some tumour types. It is usually delivered to the tumour in 1–5 treatments on consecutive or alternating days, with a high dose being given per treatment. SRT is usually given in a single week, reducing time spent in hospital.

## GROUND FLOOR

### ONCOLOGY AND RADIOTHERAPY SUITE

- A** Reception and Waiting Area
- B** 2 Chemotherapy Rooms
- C** LINAC Suite
- D** Oncology Outpatient Ward
- E** LINAC Prep Room
- F** LINAC Control and Viewing Rooms
- G** Diagnostics suite with MRI and CT suites, 2 X-ray rooms, 2 ultrasound rooms and endoscopy room

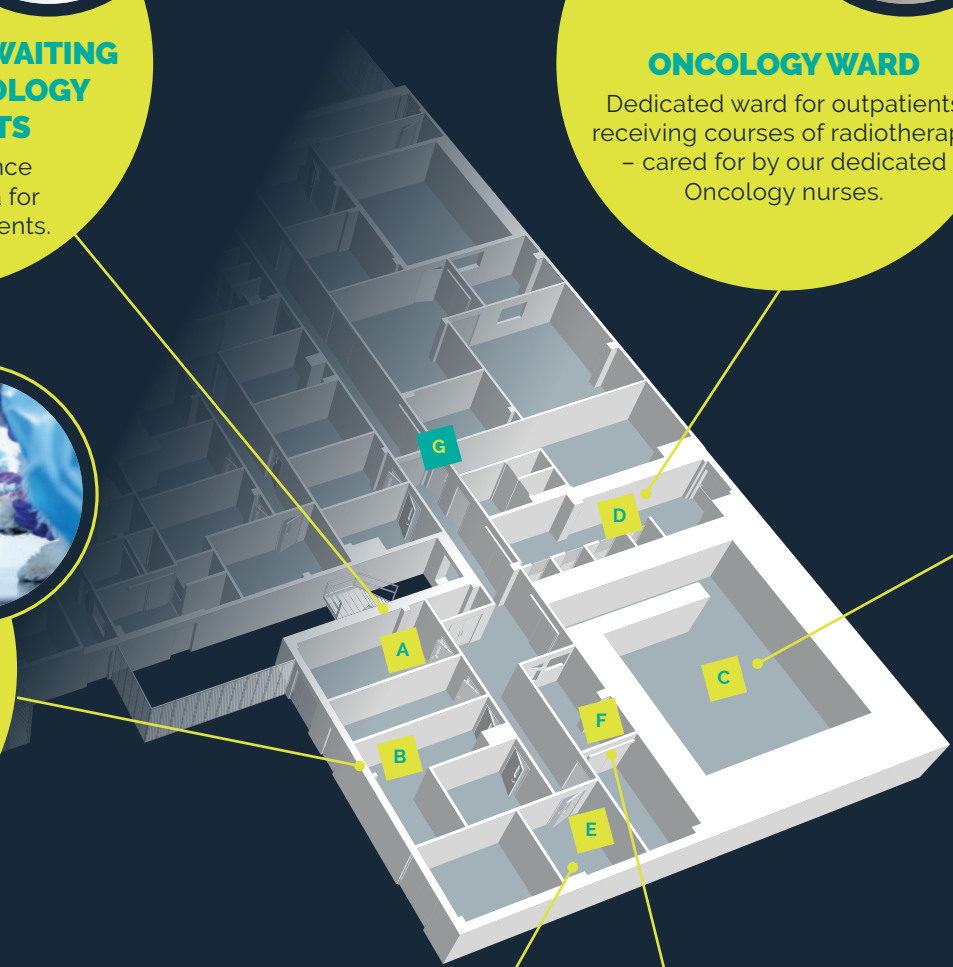
### LINAC PATIENT PREP ROOM

Dedicated room located adjacent to LINAC so patients can be prepared for treatment with minimum stress and anxiety.



### LINAC VIEWING AND CONTROL ROOM

Our team control the LINAC system and closely monitor patients' treatments from the viewing and control room.



# MEET THE TEAM



The expertise of the team at Southfields is second to none. With one of the most experienced teams of oncology diplomates in Europe, including a leading double-boarded specialist in small animal oncology and radiation oncology, our team has many years of combined experience working with a multi-disciplinary approach to cancer patient management.

Our team also includes dedicated radiotherapy technicians and therapeutic radiographers who have extensive experience in administering radiotherapy treatments to both humans and pets. Oncology patients are cared for by nurses experienced in nursing pets through chemotherapy, radiotherapy and other treatments. They provide dedicated care for cancer patients and aim to make the care experience as fun and stress-free as possible.

## Unsurpassed experience

Led by James Elliott, a renowned RCVS, European and American Specialist in both small animal oncology and radiation oncology, our veterinary radiotherapy team has many years of experience dealing with radiation oncology cases.

James trained in the United States at a centre that is at the forefront of pioneering stereotactic radiosurgery and stereotactic radiation therapy – and is the most experienced Radiation Oncologist in the country in the planning and delivery of this type of treatment.



**James Elliott**  
Head of Service –  
Lead in Radiation  
Oncology

## Expertise you can count on

Our Oncology and Radiotherapy teams work closely together to determine the best and most comprehensive treatment plan for each patient

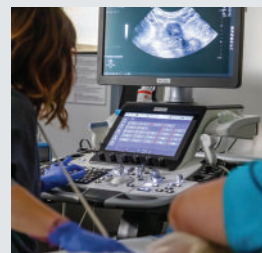
All our specialists work on site at our hospital, directly interacting with the patients themselves. All patients will be examined and cared for by a radiation oncology specialist throughout their treatment course. Our specialists support our referring vets with ongoing aftercare for patients following their in-house treatment with us.

## The reassurance of teamwork

As part of the Linnaeus group, we have multiple oncologists on hand to offer support and expertise on more complex or unusual cases... each one with a wealth of experience and knowledge of all kinds of cases, both standard and rare.

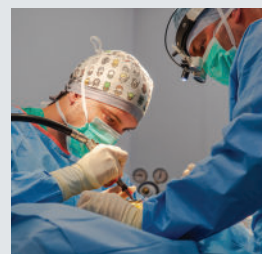
# SUPPORTING SERVICES AND FACILITIES YOU CAN COUNT ON

As well as being the leader in cancer treatment for small animals in the UK, at Southfields we offer a wide range of other services too. A one-stop-shop for all your referral needs, we are a true multi-disciplinary veterinary centre in every sense of the word.



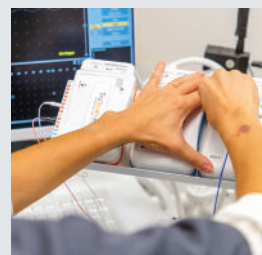
## Diagnostic Imaging

Our Diagnostic Imaging suite is equipped with MRI, CT, X-ray and Ultrasound; and our oncologists work closely with our Diagnostic Imaging team.



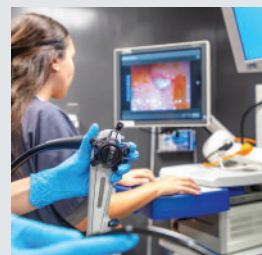
## Soft Tissue Surgery

Our specialist-led, on-site Soft Tissue Surgery team are experienced in oncologic surgery. They can operate to remove tumours when required; plus because all treatment is carried out at our Basildon hospital there is no need for patients to travel elsewhere for surgical procedures.



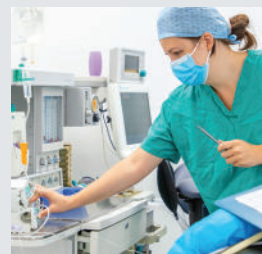
## Neurology and Neurosurgery

Our oncologists work alongside our specialist-led Neurology and Neurosurgery team to develop individual care plans for patients referred to us with brain or spinal tumours.



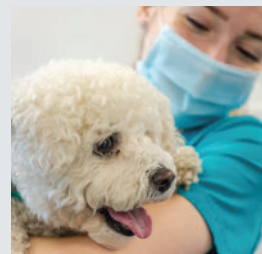
## Internal Medicine

Southfields' Internal Medicine team work closely with our Oncology team to support any oncology patients who may develop or have a concurrent medical problem.



## Anaesthesia

Our Anaesthesia team work closely with our clinicians to ensure that every patient has a plan tailored to their specific requirements and individual needs, providing pain management for the duration of their treatment.



## Nursing

Our Nursing team includes nurses who focus on specific areas of veterinary nursing, including oncology. We also have a team of multi-disciplinary nurses who work across all our services, enabling us to be flexible and provide care when and where it is needed.



**Border Collie Molly had neurosurgery and radiation therapy at Southfields to treat a rare spinal fibroma.**

"Molly is doing really well and is back to her normal naughty self! We honestly cannot thank everyone enough for the amazing care and treatment that she received and we are truly grateful. Thank you once again for giving our gorgeous girl the best chance possible. We cannot recommend you enough."

**Molly's Owner**



"Huge thank you to the Oncologists and Nurses who took our precious boy Luca through his chemo treatment. He took the treatment like a warrior and the team reassured us each visit and we knew they were always at the end of the phone. He is now in remission and with regular checks on the lymph nodes with the team we know he is getting the best care we could have wished for.

Thank you from the bottom of our hearts for getting him through this."

**Luca's Owner**

## THE BEST FACILITIES FOR THE BEST TREATMENT

From having one of the largest teams of oncology diplomates in Europe, including a leading specialist double-boarded in small animal oncology and radiation oncology, to offering some of the most advanced oncology and radiotherapy treatments in the UK, the new Oncology and Radiotherapy Suite at Southfields Veterinary Specialists offers your patients the very best in dedicated cancer care.

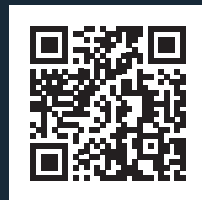
### Ready to refer or like to find out more?

We offer a free advice service to vets. To refer or speak to an experienced member of our team:

Call: **01268 564 664**

Email: **[oncology@southfields.co.uk](mailto:oncology@southfields.co.uk)**

Visit: **[southfields.co.uk/oncology](https://southfields.co.uk/oncology)**



Scan here to learn more



**Southfields**  
veterinary specialists

PART OF  
**LINNAEUS**